



MOVE INN ESTATES
MAKING THE RIGHT MOVE



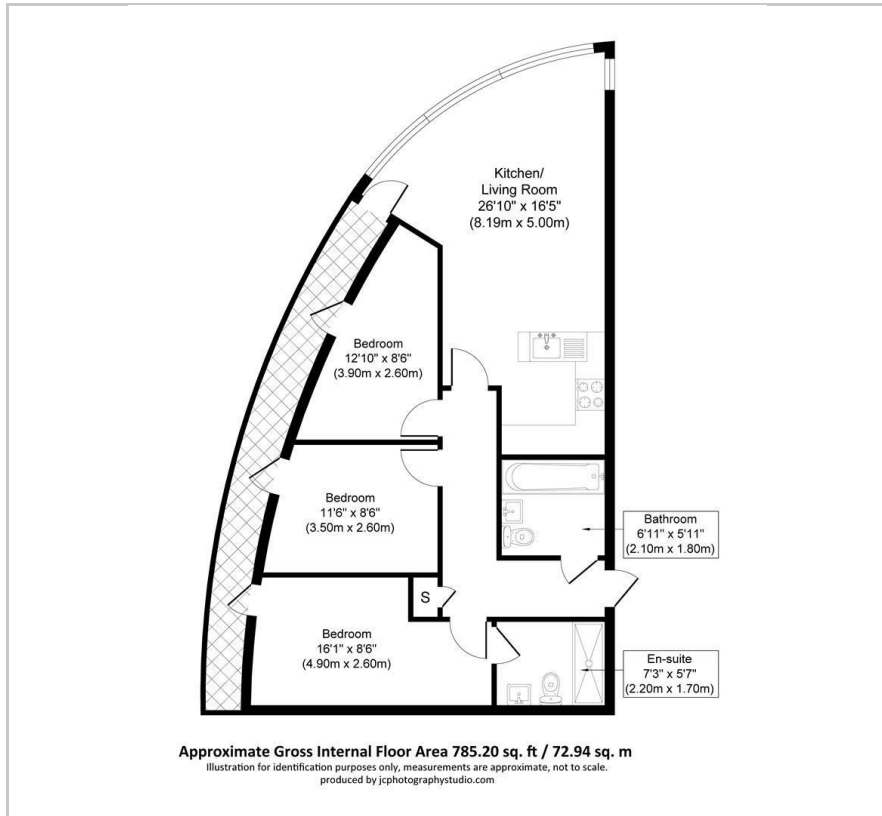
High Point Village, Station Approach

, Hayes, UB3 4FE

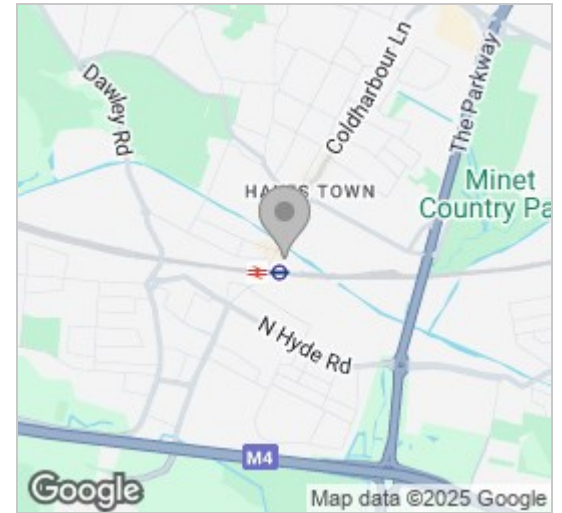
Price Guide £400,000



Floor Plan



Area Map



Energy Efficiency Graph



Viewing

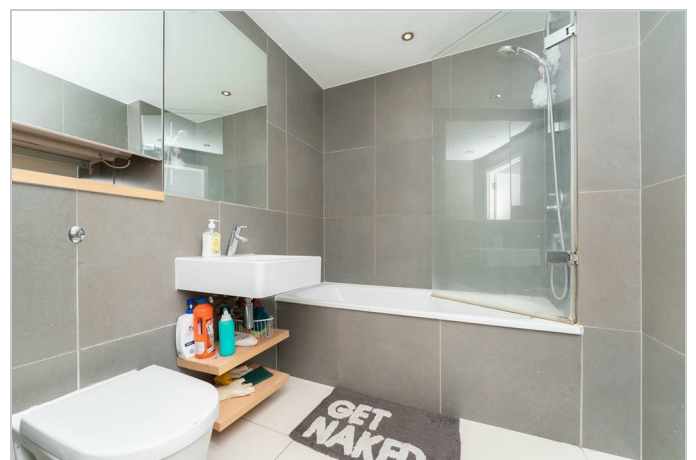
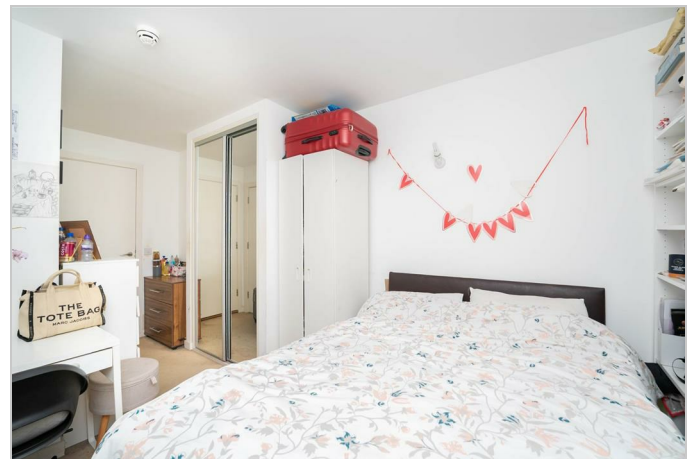
Please contact our Move Inn Estates - Sales Office on 0208 574 4966 if you wish to arrange a viewing appointment for this property or require further information.

- Secure Gated Development / ▪ Exceptional Panoramic & Distant Video Entry System City Views
- Large Curved Balcony With ▪ 3 Bedroom 2 Bathroom Apartment Views
- Modern Fitted Kitchen Area with ▪ 24hr Concierge Integrated Appliances
- 1 Car Parking Space

MOVE INN ESTATE AGENTS are delighted to offer this CHAIN FREE 3 Bedroom sixth floor apartment in the sought after HIGH POINT VILLAGE development next to the Grand Union Canal in Hayes Town Centre. The property is the largest style apartment within the development and offers exceptional panoramic chimney-top views towards the city and views to the North and West via the vast floor-to-ceiling windows and large balcony. Accommodation comprises: Open-Plan Lounge/Living & Dining area, Modern Kitchen Area with Integrated Appliances, Large Private Balcony with Canal Views, 3 Bedrooms offering additional balcony access and en-suite Shower Room/WC to the master bedroom and modern bathroom/WC. Externally there is private allocated underground parking.

This award-winning urban village features four interconnected landscaped gardens, a water feature and places to relax, a public square for events, retail and out-door dining and canal side walkway. Other features includes a 24hr concierge, secure video-entry phone system and gymnasium with swimming pool and dance studio.

The property would suit a wide spectrum of potential buyers including commuters, first-time and investment buyers. Hayes Town has a wealth of comprehensive shopping facilities and amenities along with schools and regular bus services providing routes to surrounding districts.



These particulars, whilst believed to be accurate are set out as a general outline only for guidance and do not constitute any part of an offer or contract. Intending purchasers should not rely on them as statements of representation of fact, but must satisfy themselves by inspection or otherwise as to their accuracy. No person in this firm's employment has the authority to make or give any representation or warranty in respect of the property.